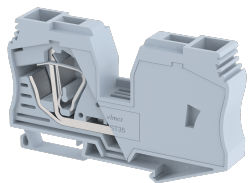


## DST35

Terminal Type - DST35 , Feed-through terminal block, nominal voltage: 1000 V, nominal current: 125 A, Rated cross-section – 35 mm<sup>2</sup>, connection method: Spring Cage connection, number of connections: 2, cross section: 6 mm<sup>2</sup> - 35 mm<sup>2</sup>, mounting type: TS 35/7.5, TS 35/15



### Approvals



### General Information

Product Name	DST35
Connection Method	Spring Cage Connection
Rating	1000 V / 125 A / 35 mm <sup>2</sup>
HSN Number	85389000
Standard Packing Qty (in No)	30
Country Of Origin	India
Screw thread	-

### Dimensions & Weight

Width	16 mm	0.63 inch
Length	100 mm	3.94 inch
Height	60.5 mm	2.38 inch
Weight of std. Packing Unit	2.92 Kg	

### Material Data

Insulating Material	Polyamide 6,6
Standard Colour	Gray
Colour Variants	Red, Yellow, Blue, Black, Green, Khakhi

### Rated Conductor Size

Conductor cross section flexible min	6 mm <sup>2</sup>
Conductor cross section flexible max	35 mm <sup>2</sup>
Conductor cross section solid min	6 mm <sup>2</sup>
Conductor cross section solid max	35 mm <sup>2</sup>

### Rated Conductor Size

Conductor cross section flexible min	6 mm <sup>2</sup>
Conductor cross section flexible max	35 mm <sup>2</sup>


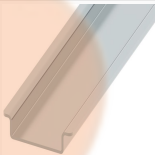
Conductor cross section solid min	6 mm <sup>2</sup>
Conductor cross section solid max	35 mm <sup>2</sup>

**Product Accessories**

**DIN Rail Perforated**

CHKDS	Height : 15.00 mm Width : 35.00 mm Thickness : 1.50 mm Length : 2,000.00 mm	
CHKS	Height : 7.50 mm Width : 35.00 mm Thickness : 1.00 mm	

**DIN Rail, Unperforated**

CHKD	Height : 15.00 mm Width : 35.00 mm Thickness : 1.50 mm	
CHK	Height : 7.50 mm Width : 35.00 mm Thickness : 1.00 mm	

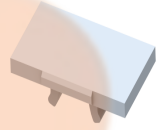
**End Cap**

CHKENDCAP	Height : 14.00 mm Width : 9.00 mm Length : 41.50 mm	
-----------	---	---

**End Clamp**

SCUP	Height : 34.00 mm Width : 9.00 mm Length : 44.75 mm	
SCEC35	Height : 31.50 mm Width : 8.00 mm Length : 45.80 mm	
SCUSL	Height : 41.10 mm Width : 8.00 mm Length : 47.50 mm	
SCUDD	Height : 50.00 mm Width : 10.00 mm Length : 55.60 mm	

End Clamp		
DCKN	Height : 33.00 mm Width : 6.00 mm Length : 43.50 mm	
DCKN10	Height : 35.00 mm Width : 10.00 mm Length : 43.50 mm	
SCKN	Height : 34.50 mm Width : 8.00 mm Length : 44.90 mm	
SCUN	Height : 35.50 mm Width : 9.50 mm Length : 50.60 mm	

Marker For Terminal Blocks		
LABEL KN12	Height : 2.43 mm Width : 12.00 mm Length : 8.50 mm	

Plug-in Bridge/Jumper		
SSL35	Height : 43.00 mm Width : 13.00 mm Length : 11.30 mm	

Marker carriers		
SCUDDMLH	Height : 71.50 mm Width : 11.00 mm Length : 55.60 mm	
SCUNMLH	Height : 53.50 mm Width : 11.00 mm Length : 50.60 mm	
DCKNMLH	Height : 45.00 mm Width : 10.00 mm Length : 43.50 mm	
SCKNMLH	Height : 42.00 mm Width : 16.00 mm Length : 44.70 mm	