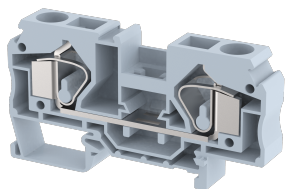


DST16

Terminal Type - DST16, Feed-through terminal block, nominal voltage: 800 V, nominal current: 76 A, Rated cross-section -16 mm², connection method: Spring Cage Connection, number of connections: 2, cross section: 1.5 mm² - 16 mm², AWG: 16 - 6, mounting type: TS 35/7.5, TS 35/15



Approvals



General Information

Product Name	DST16
Connection Method	Spring Cage Connection
Rating	800 V / 76 A / 16 mm ²
HSN Number	85389000
Standard Packing Qty (in No)	50
Country Of Origin	India
Screw thread	-

Dimensions & Weight

Width	12 mm	0.47 inch
Length	81.8 mm	3.22 inch
Height	43.5 mm	1.71 inch
Weight of std. Packing Unit	1.7 Kg	

Material Data

Insulating Material	Polyamide 6,6
Standard Colour	Gray
Colour Variants	Red, Yellow, Blue, Black, Green, Khakhi

Rated Conductor Size

Conductor cross section flexible min	1.5 mm ²
Conductor cross section flexible max	16 mm ²
Conductor cross section solid min	1.5 mm ²
Conductor cross section solid max	16 mm ²

Rated Conductor Size

Conductor cross section flexible min	1.5 mm ²
Conductor cross section flexible max	16 mm ²

Conductor cross section solid min	1.5 mm ²
Conductor cross section solid max	16 mm ²

Ratings - CSA

CSA Standard	CSA C22.2 NO 158
B - CSA Nominal Voltage U _N	600 V
B - CSA Nominal Current I _N	65 A
B - CSA Wire Min	16 AWG
B - CSA Wire Max	6 AWG



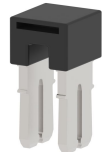
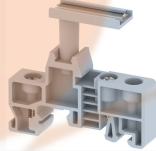
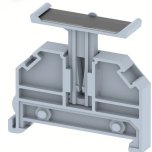
Ratings - UL

UL Standard	
B - UL Nominal Voltage U _N	V
B - UL Nominal Current I _N	A
B - UL Wire Min	AWG
B - UL Wire Max	AWG

Product Accessories

Cover Profile		
PCPDBF-4	Height : 13.10 mm Thickness : 1.00 mm Length : 95.00 mm	
DIN Rail Perforated		
CHKDS	Height : 15.00 mm Width : 35.00 mm Thickness : 1.50 mm Length : 2,000.00 mm	
CHKS	Height : 7.50 mm Width : 35.00 mm Thickness : 1.00 mm	
DIN Rail, Unperforated		
CHKD	Height : 15.00 mm Width : 35.00 mm Thickness : 1.50 mm	
CHK	Height : 7.50 mm Width : 35.00 mm Thickness : 1.00 mm	

End Cap		
CHKENDCAP	Height : 14.00 mm Width : 9.00 mm Length : 41.50 mm	
End Clamp		
SCUP	Height : 34.00 mm Width : 9.00 mm Length : 44.75 mm	
SCEC35	Height : 31.50 mm Width : 8.00 mm Length : 45.80 mm	
SCUSL	Height : 41.10 mm Width : 8.00 mm Length : 47.50 mm	
SCUDD	Height : 50.00 mm Width : 10.00 mm Length : 55.60 mm	
DCKN	Height : 33.00 mm Width : 6.00 mm Length : 43.50 mm	
DCKN10	Height : 35.00 mm Width : 10.00 mm Length : 43.50 mm	
SCKN	Height : 34.50 mm Width : 8.00 mm Length : 44.90 mm	
SCUN	Height : 35.50 mm Width : 9.50 mm Length : 50.60 mm	
End Cover		
DSEP16	Height : 36.50 mm Width : 2.50 mm Length : 81.80 mm	

Marker For Terminal Blocks		
LABEL KN12	Height : 2.43 mm Width : 12.00 mm Length : 8.50 mm	
Partition Plate		
DBF-4	Height : 54.00 mm Width : 3.00 mm Length : 90.00 mm	
Plug-in Bridge/Jumper		
SSL16	Height : 32.60 mm Width : 10.40 mm Length : 11.30 mm	
Marker carriers		
SCUDDMLH	Height : 71.50 mm Width : 11.00 mm Length : 55.60 mm	
SCUNMLH	Height : 53.50 mm Width : 11.00 mm Length : 50.60 mm	
DCKNMLH	Height : 45.00 mm Width : 10.00 mm Length : 43.50 mm	
SCKNMLH	Height : 42.00 mm Width : 16.00 mm Length : 44.70 mm	