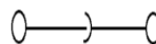
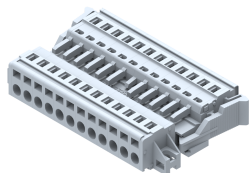


DPSC5.08PMV-12W

Terminal Type - DPSC5.08PMV - 12W , Plug & socket type terminal block , nominal voltage: 250 V, nominal current: 16 A, connection method: Spring cage connection, number of connections: 24 , cross-section: 0.2 mm² - 2.5 mm², Rated Cross section - 2.5 mm² , AWG : 24-12 , mounting type: Panel mounting / Surface mounting



Approvals



General Information

Product Name	DPSC5.08PMV-12W
Connection Method	Spring Cage Connection
Rating	250 V / 16 A / 2.5 mm ² / Nm
HSN Number	8904476703439
Standard Packing Qty (in No)	20
Country Of Origin	India
Screw thread	NAV

Dimensions & Weight

Width	77 mm	3.03 inch
Length	45.15 mm	1.78 inch
Height	14.5 mm	0.57 inch
Weight of std. Packing Unit	0.93 Kg	

Material Data

Insulating Material	Polyamide 6,6
Standard Colour	Gray
Colour Variants	Red, Yellow, Blue, Black, Green, Khakhi

Rated Conductor Size

Conductor cross section flexible min	0.2 mm ²
Conductor cross section flexible max	2.5 mm ²
Conductor cross section solid min	0.2 mm ²
Conductor cross section solid max	2.5 mm ²

Rated Conductor Size

Conductor cross section flexible min	0.2 mm ²
Conductor cross section flexible max	2.5 mm ²

Conductor cross section solid min	0.2 mm ²
Conductor cross section solid max	2.5 mm ²

Ratings - UL

UL Standard	UL 1059
B - UL Nominal Voltage U _N	300 V
B - UL Nominal Current I _N	16 A
B - UL Wire Min	24 AWG
B - UL Wire Max	12 AWG

Product Accessories

Marker For Terminal Blocks

LABEL KN5.08	Pitch : 5.08 mm	
--------------	-----------------	---

Tool

DPSCCOT	Height : 6.90 mm Width : 5.00 mm Length : 20.30 mm	
---------	--	---