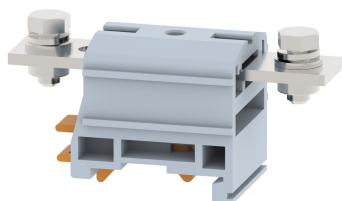


DPBB50CN

Terminal Type - DPBB50CN , High current connectors , nominal voltage: 1000 V, nominal current: 150 A, connection method : Bolt connection with clinch nut , number of connections: 2, cross section: 10 mm² - 50 mm², AWG: 6 - 1 , mounting type: TS 35/7.5, TS 35/15 , TS 32



Approvals



General Information

Product Name	DPBB50CN
Connection Method	Bolt Connection
Rating	1000 V / 150 A / 50 mm ² / 3 Nm
HSN Number	85389000
Standard Packing Qty (in No)	10
Country Of Origin	India
Screw thread	M6

Dimensions & Weight

Width	37.2 mm	1.46 inch
Length	85 mm	3.35 inch
Height	42.8 mm	1.69 inch
Weight of std. Packing Unit	0.83 Kg	

Material Data

Insulating Material	Polyamide 6,6
Standard Colour	Gray
Colour Variants	Red, Yellow, Blue, Black, Green, Khakhi

Rated Conductor Size

Conductor cross section flexible min	10 mm ²
Conductor cross section flexible max	50 mm ²
Conductor cross section solid min	10 mm ²
Conductor cross section solid max	50 mm ²

Rated Conductor Size

Conductor cross section flexible min	10 mm ²
Conductor cross section flexible max	50 mm ²

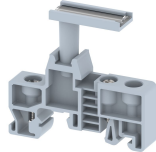
Conductor cross section solid min	10 mm ²
Conductor cross section solid max	50 mm ²

Product Accessories

Cover Profile		
PCP120	Width : 41.00 mm Thickness : 1.50 mm Length : 126.00 mm	
DIN Rail Perforated		
CHKDS	Height : 15.00 mm Width : 35.00 mm Thickness : 1.50 mm Length : 2,000.00 mm	
CHKS	Height : 7.50 mm Width : 35.00 mm Thickness : 1.00 mm	
CHS	Height : 15.00 mm Width : 32.00 mm Thickness : 1.50 mm	
DIN Rail, Unperforated		
CHKD	Height : 15.00 mm Width : 35.00 mm Thickness : 1.50 mm	
CHK	Height : 7.50 mm Width : 35.00 mm Thickness : 1.00 mm	
End Cap		
CHKENDCAP	Height : 14.00 mm Width : 9.00 mm Length : 41.50 mm	
End Clamp		
SCUDD	Height : 50.00 mm Width : 10.00 mm Length : 55.60 mm	
SCUSL	Height : 41.10 mm Width : 8.00 mm Length : 47.50 mm	

Marker For Terminal Blocks		
LABEL KN10	Height : 2.89 mm Width : 10.00 mm Length : 8.50 mm	

Partition Plate		
BPN70	Height : 67.50 mm Width : 3.00 mm Length : 123.80 mm	

Marker carriers		
SCUNMLH	Height : 53.50 mm Width : 11.00 mm Length : 50.60 mm	
SCKNMLH	Height : 42.00 mm Width : 16.00 mm Length : 44.70 mm	