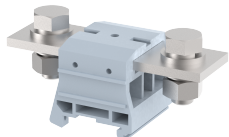


## DPBB185N

Terminal Type - DPBB185N, High Current connectors, nominal voltage: 1000 V, nominal current: 353 A, Rated cross-section - 185 mm<sup>2</sup>, connection method: Bolt connection, number of connections: 2, cross-section: 50 mm<sup>2</sup> - 185 mm<sup>2</sup>, mounting type: TS 35/15, TS 32



### Approvals



### General Information

Product Name	DPBB185N
Connection Method	Bolt Connection
Rating	1000 V / 353 A / 185 mm <sup>2</sup> / 14 Nm
HSN Number	85389000
Standard Packing Qty (in No)	4
Country Of Origin	India
Screw thread	M12

### Dimensions & Weight

Width	53 mm	2.09 inch
Length	115 mm	4.53 inch
Height	53.3 mm	2.1 inch
Weight of std. Packing Unit	1.49 Kg	

### Material Data

Insulating Material	Polyamide 6,6
Standard Colour	Gray
Colour Variants	Red, Yellow, Blue, Black, Green, Khakhi

### Rated Conductor Size

Conductor cross section flexible min	50 mm <sup>2</sup>
Conductor cross section flexible max	185 mm <sup>2</sup>
Conductor cross section solid min	50 mm <sup>2</sup>
Conductor cross section solid max	185 mm <sup>2</sup>

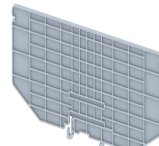
### Rated Conductor Size

Conductor cross section flexible min	50 mm <sup>2</sup>
Conductor cross section flexible max	185 mm <sup>2</sup>

Conductor cross section solid min	50 mm <sup>2</sup>
Conductor cross section solid max	185 mm <sup>2</sup>

**Product Accessories**

<b>Cover Profile</b>		
PCP240-2W	Width : 111.00 mm Thickness : 1.50 mm Length : 186.00 mm	
<b>DIN Rail Perforated</b>		
CHKDS	Height : 15.00 mm Width : 35.00 mm Thickness : 1.50 mm Length : 2,000.00 mm	
CHS	Height : 15.00 mm Width : 32.00 mm Thickness : 1.50 mm	
<b>DIN Rail, Unperforated</b>		
CHKD	Height : 15.00 mm Width : 35.00 mm Thickness : 1.50 mm	
<b>End Cap</b>		
CHKENDCAP	Height : 14.00 mm Width : 9.00 mm Length : 41.50 mm	
<b>End Clamp</b>		
SCUP	Height : 34.00 mm Width : 9.00 mm Length : 44.75 mm	
SCEC35	Height : 31.50 mm Width : 8.00 mm Length : 45.80 mm	
SCUDD	Height : 50.00 mm Width : 10.00 mm Length : 55.60 mm	
SCUSL	Height : 41.10 mm Width : 8.00 mm Length : 47.50 mm	

<b>Marker For Terminal Blocks</b>		
LABEL KN10	Height : 2.89 mm Width : 10.00 mm Length : 8.50 mm	
<b>Partition Plate</b>		
BPA 185/240	Height : 82.50 mm Width : 3.00 mm Length : 180.00 mm	
<b>Marker carriers</b>		
SCUDDMLH	Height : 71.50 mm Width : 11.00 mm Length : 55.60 mm	