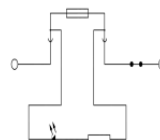
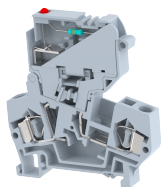


DCF4D2

Terminal Type - DCF4D2 , Fuse terminal block with LED of 48 VDC for fuse failure indication , nominal voltage: 800 V, nominal current: 10 A , suitable size of cartridge fuse : 5X20 mm and 5x25 mm, connection method: Spring Cage connection, Rated Cross section - 4 mm² , number of connections: 2, cross section: 0.5 mm² - 4 mm², mounting type: TS 35/7.5, TS 35/15



Approvals



General Information

Product Name	DCF4D2
Connection Method	Spring Cage Connection
Rating	800 V / 10 A / 4 mm ² / Nm
HSN Number	85389000
Standard Packing Qty (in No)	50
Country Of Origin	India
Screw thread	-

Dimensions & Weight

Width	8 mm	0.31 inch
Length	60 mm	2.36 inch
Height	66.6 mm	2.62 inch
Weight of std. Packing Unit	1.45 Kg	

Material Data

Insulating Material	Polyamide 6,6
Standard Colour	Gray
Colour Variants	Red, Yellow, Blue, Black, Green, Khakhi

Rated Conductor Size

Conductor cross section flexible min	0.5 mm ²
Conductor cross section flexible max	4 mm ²
Conductor cross section solid min	0.5 mm ²
Conductor cross section solid max	4 mm ²

Rated Conductor Size

Conductor cross section flexible min	0.5 mm ²
Conductor cross section flexible max	4 mm ²


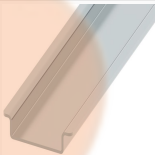
Conductor cross section solid min	0.5 mm ²
Conductor cross section solid max	4 mm ²

Product Accessories

DIN Rail Perforated

CHKDS	Height : 15.00 mm Width : 35.00 mm Thickness : 1.50 mm Length : 2,000.00 mm	
CHKS	Height : 7.50 mm Width : 35.00 mm Thickness : 1.00 mm	

DIN Rail, Unperforated

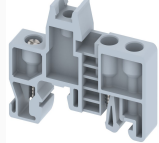
CHKD	Height : 15.00 mm Width : 35.00 mm Thickness : 1.50 mm	
CHK	Height : 7.50 mm Width : 35.00 mm Thickness : 1.00 mm	

End Cap

CHKENDCAP	Height : 14.00 mm Width : 9.00 mm Length : 41.50 mm	
-----------	---	---

End Clamp


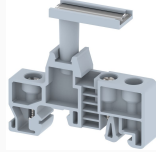
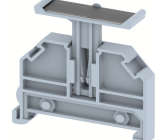
SCUP	Height : 34.00 mm Width : 9.00 mm Length : 44.75 mm	
SCEC35	Height : 31.50 mm Width : 8.00 mm Length : 45.80 mm	
SCUSL	Height : 41.10 mm Width : 8.00 mm Length : 47.50 mm	
SCUDD	Height : 50.00 mm Width : 10.00 mm Length : 55.60 mm	

End Clamp		
DCKN	Height : 33.00 mm Width : 6.00 mm Length : 43.50 mm	
DCKN10	Height : 35.00 mm Width : 10.00 mm Length : 43.50 mm	
SCKN	Height : 34.50 mm Width : 8.00 mm Length : 44.90 mm	
SCUN	Height : 35.50 mm Width : 9.50 mm Length : 50.60 mm	

End Cover		
DFEP	Height : 56.50 mm Width : 2.50 mm Length : 66.00 mm	

Marker For Terminal Blocks		
LABEL KN8	Height : 2.43 mm Width : 8.00 mm Length : 8.50 mm	

Plug-in Bridge/Jumper		
SSL4	Height : 23.80 mm Width : 6.00 mm Pitch : 3.40 mm Length : 8.00 mm	

Marker carriers		
SCUDDMLH	Height : 71.50 mm Width : 11.00 mm Length : 55.60 mm	
SCUNMLH	Height : 53.50 mm Width : 11.00 mm Length : 50.60 mm	
DCKNMLH	Height : 45.00 mm Width : 10.00 mm Length : 43.50 mm	

Marker carriers

SCKNMLH	Height : 42.00 mm Width : 16.00 mm Length : 44.70 mm	
---------	--	---

