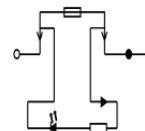
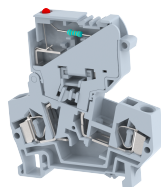


DCF4A1

Terminal Type - DCF4A1 , Fuse terminal block with LED of 110 VAC for fuse failure indication , nominal voltage: 800 V, nominal current: 10 A , Rated cross-section - 4 mm² suitable size of cartridge fuse : 5X20 mm and 5x25 mm, connection method: Spring Cage connection , Rated cross-section - 4 mm² , number of connections: 2, cross section: 0.5 mm² - 4 mm² , mounting type: TS 35/7.5, TS 35/15



Approvals



General Information

Product Name	DCF4A1
Connection Method	Spring Cage Connection
Rating	800 V / 10 A / 4 mm ²
HSN Number	85389000
Standard Packing Qty (in No)	50
Country Of Origin	India
Screw thread	-

Dimensions & Weight

Width	8 mm	0.31 inch
Length	60 mm	2.36 inch
Height	66.6 mm	2.62 inch
Weight of std. Packing Unit	1 Kg	

Material Data

Insulating Material	Polyamide 6,6
Standard Colour	Gray
Colour Variants	Red, Yellow, Blue, Black, Green, Khakhi

Rated Conductor Size

Conductor cross section flexible min	0.5 mm ²
Conductor cross section flexible max	4 mm ²
Conductor cross section solid min	0.5 mm ²
Conductor cross section solid max	4 mm ²

Rated Conductor Size

Conductor cross section flexible min	0.5 mm ²
--------------------------------------	---------------------

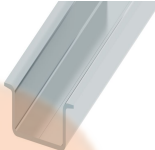
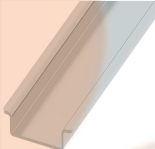
Conductor cross section flexible max	4 mm ²
Conductor cross section solid min	0.5 mm ²
Conductor cross section solid max	4 mm ²

Product Accessories

DIN Rail Perforated

CHKDS	Height : 15.00 mm Width : 35.00 mm Thickness : 1.50 mm Length : 2,000.00 mm	
CHKS	Height : 7.50 mm Width : 35.00 mm Thickness : 1.00 mm	

DIN Rail, Unperforated

CHKD	Height : 15.00 mm Width : 35.00 mm Thickness : 1.50 mm	
CHK	Height : 7.50 mm Width : 35.00 mm Thickness : 1.00 mm	

End Cap

CHKENDCAP	Height : 14.00 mm Width : 9.00 mm Length : 41.50 mm	
-----------	---	---

End Clamp


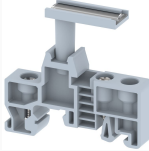
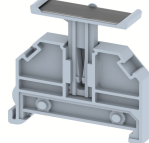
SCUP	Height : 34.00 mm Width : 9.00 mm Length : 44.75 mm	
SCEC35	Height : 31.50 mm Width : 8.00 mm Length : 45.80 mm	
SCUSL	Height : 41.10 mm Width : 8.00 mm Length : 47.50 mm	
SCUDD	Height : 50.00 mm Width : 10.00 mm Length : 55.60 mm	

End Clamp		
DCKN	Height : 33.00 mm Width : 6.00 mm Length : 43.50 mm	
DCKN10	Height : 35.00 mm Width : 10.00 mm Length : 43.50 mm	
SCKN	Height : 34.50 mm Width : 8.00 mm Length : 44.90 mm	
SCUN	Height : 35.50 mm Width : 9.50 mm Length : 50.60 mm	

End Cover		
DFEP	Height : 56.50 mm Width : 2.50 mm Length : 66.00 mm	

Marker For Terminal Blocks		
LABEL KN8	Height : 2.43 mm Width : 8.00 mm Length : 8.50 mm	

Plug-in Bridge/Jumper		
SSL4	Height : 23.80 mm Width : 6.00 mm Pitch : 3.40 mm Length : 8.00 mm	

Marker carriers		
SCUDDMLH	Height : 71.50 mm Width : 11.00 mm Length : 55.60 mm	
SCUNMLH	Height : 53.50 mm Width : 11.00 mm Length : 50.60 mm	
DCKNMLH	Height : 45.00 mm Width : 10.00 mm Length : 43.50 mm	

Marker carriers

SCKNMLH	Height : 42.00 mm Width : 16.00 mm Length : 44.70 mm	
---------	--	---

