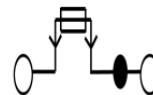
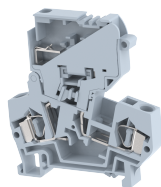


DCF4

Terminal Type - DCF4, Fuse Terminal block, nominal voltage: 800 V, nominal current: 10 A, Rated cross-section - 4 mm², suitable size of cartridge fuse: 5X20 mm and 5X25 mm, connection method: Spring Cage connection, number of connections: 2, cross-section: 0.5 mm² - 4 mm², AWG: 20 - 10, mounting type: TS 35/7.5, TS 35/15



Approvals



General Information

| | |
|------------------------------|----------------------------------|
| Product Name | DCF4 |
| Connection Method | Spring Cage Connection |
| Rating | 800 V / 10 A / 4 mm ² |
| HSN Number | 85389000 |
| Standard Packing Qty (in No) | 50 |
| Country Of Origin | India |
| Screw thread | - |

Dimensions & Weight

| | | |
|-----------------------------|---------|-----------|
| Width | 8 mm | 0.31 inch |
| Length | 60 mm | 2.36 inch |
| Height | 66.6 mm | 2.62 inch |
| Weight of std. Packing Unit | 1.09 Kg | |

Material Data

| | |
|---------------------|---|
| Insulating Material | Polyamide 6,6 |
| Standard Colour | Gray |
| Colour Variants | Red, Yellow, Blue, Black, Green, Khakhi |

Rated Conductor Size

| | |
|--------------------------------------|---------------------|
| Conductor cross section flexible min | 0.5 mm ² |
| Conductor cross section flexible max | 4 mm ² |
| Conductor cross section solid min | 0.5 mm ² |
| Conductor cross section solid max | 4 mm ² |

Rated Conductor Size

| | |
|--------------------------------------|---------------------|
| Conductor cross section flexible min | 0.5 mm ² |
| Conductor cross section flexible max | 4 mm ² |

| | |
|-----------------------------------|---------------------|
| Conductor cross section solid min | 0.5 mm ² |
| Conductor cross section solid max | 4 mm ² |

Ratings - CSA

| | |
|--|------------------|
| CSA Standard | CSA C22.2 NO 158 |
| B - CSA Nominal Voltage U _N | 600 V |
| B - CSA Nominal Current I _N | 10 A |
| B - CSA Wire Min | 20 AWG |
| B - CSA Wire Max | 10 AWG |

Ratings - UL

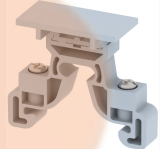
| | |
|---------------------------------------|-----|
| UL Standard | |
| B - UL Nominal Voltage U _N | 0 V |
| B - UL Nominal Current I _N | 0 A |
| B - UL Wire Min | AWG |
| B - UL Wire Max | AWG |

Product Accessories

| DIN Rail Perforated | | |
|------------------------|--|--|
| CHKDS | Height : 15.00 mm Width : 35.00 mm Thickness : 1.50 mm Length : 2,000.00 mm | |
| CHKS | Height : 7.50 mm Width : 35.00 mm Thickness : 1.00 mm | |
| DIN Rail, Unperforated | | |
| CHKD | Height : 15.00 mm Width : 35.00 mm Thickness : 1.50 mm | |
| CHK | Height : 7.50 mm Width : 35.00 mm Thickness : 1.00 mm | |
| End Cap | | |
| CHKENDCAP | Height : 14.00 mm Width : 9.00 mm Length : 41.50 mm | |

| End Clamp | | |
|-----------------------------------|--|---|
| SCUP | Height : 34.00 mm Width : 9.00 mm Length : 44.75 mm |  |
| SCEC35 | Height : 31.50 mm Width : 8.00 mm Length : 45.80 mm |  |
| SCUSL | Height : 41.10 mm Width : 8.00 mm Length : 47.50 mm |  |
| SCUDD | Height : 50.00 mm Width : 10.00 mm Length : 55.60 mm |  |
| DCKN | Height : 33.00 mm Width : 6.00 mm Length : 43.50 mm |  |
| DCKN10 | Height : 35.00 mm Width : 10.00 mm Length : 43.50 mm |  |
| SCKN | Height : 34.50 mm Width : 8.00 mm Length : 44.90 mm |  |
| SCUN | Height : 35.50 mm Width : 9.50 mm Length : 50.60 mm |  |
| End Cover | | |
| DFEP | Height : 56.50 mm Width : 2.50 mm Length : 66.00 mm |  |
| Marker For Terminal Blocks | | |
| LABEL KN8 | Height : 2.43 mm Width : 8.00 mm Length : 8.50 mm |  |

| Plug-in Bridge/Jumper | | |
|-----------------------|---|---|
| SSL4 | Height : 23.80 mm Width : 6.00 mm Pitch : 3.40 mm Length : 8.00 mm |  |

| Marker carriers | | |
|-----------------|--|--|
| SCUDDMLH | Height : 71.50 mm Width : 11.00 mm Length : 55.60 mm |  |
| SCUNMLH | Height : 53.50 mm Width : 11.00 mm Length : 50.60 mm |  |
| DCKNMLH | Height : 45.00 mm Width : 10.00 mm Length : 43.50 mm |  |
| SCKNMLH | Height : 42.00 mm Width : 16.00 mm Length : 44.70 mm |  |

