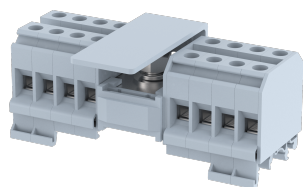


## DBK1X8

Terminal Type - DBK1X8, Distribution Block, nominal voltage: 800 V, nominal current: IC-114 A, OG-57 A, Rated cross-section- IC-35 mm<sup>2</sup>, OG-10 mm<sup>2</sup>, connection method: 1 Nut connection for IC & Screw connection for OG, number of connections: 17, cross-section: IC-10 -50 mm<sup>2</sup>, OG-2.5 - 16 mm<sup>2</sup>, mounting type: TS 35/7.5, TS 35/15, TS32



### Approvals



### General Information

Product Name	DBK1X8
Connection Method	1 nut connection for IC & Screw clamp connection for OG
Rating	800 V / IC-114 A, OG-57 A / IC-35 mm <sup>2</sup> , OG-10 mm <sup>2</sup> / IC-6 Nm, OG-1.2 Nm
HSN Number	85389000
Standard Packing Qty (in No)	5
Country Of Origin	India
Screw thread	IC-M8, OG-M4

### Dimensions & Weight

Width	68 mm	2.68 inch
Length	114.5 mm	4.51 inch
Height	50.3 mm	1.98 inch
Weight of std. Packing Unit	1.15 Kg	

### Material Data

Insulating Material	Polyamide 6,6
Standard Colour	Gray
Colour Variants	Red, Yellow, Blue, Black, Green, Khakhi, Gray

### Rated Conductor Size

Conductor cross section flexible min	IC-10 mm <sup>2</sup> , OG-2.5 mm <sup>2</sup>
Conductor cross section flexible max	IC-50 mm <sup>2</sup> , OG-10 mm <sup>2</sup>
Conductor cross section solid min	IC-10 mm <sup>2</sup> , OG-2.5 mm <sup>2</sup>
Conductor cross section solid max	IC-50 mm <sup>2</sup> , OG-16 mm <sup>2</sup>

### Rated Conductor Size

Conductor cross section flexible min	IC-10 mm <sup>2</sup> , OG-2.5 mm <sup>2</sup>
Conductor cross section flexible max	IC-50 mm <sup>2</sup> , OG-10 mm <sup>2</sup>

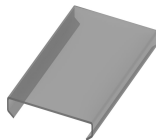
Conductor cross section solid min	IC-10 mm <sup>2</sup> , OG-2.5 mm <sup>2</sup>
Conductor cross section solid max	IC-50 mm <sup>2</sup> , OG-16 mm <sup>2</sup>

**Ratings - UL**

UL Standard	UL 1059
B - UL Nominal Voltage U <sub>N</sub>	600 V
B - UL Nominal Current I <sub>N</sub>	IC -130 A , OG-130 A
B - UL Wire Min	IC - 8 AWG , OG - 16 AWG
B - UL Wire Max	IC - 1 AWG , OG - 6 AWG

**Product Accessories**

**Cover Profile**

PCPDBF-4	Height : 13.10 mm Thickness : 1.00 mm Length : 95.00 mm	
----------	---	---

**DIN Rail Perforated**

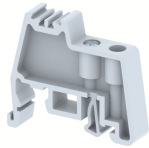
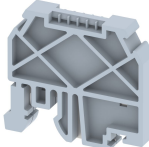
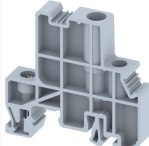

CHKDS	Height : 15.00 mm Width : 35.00 mm Thickness : 1.50 mm Length : 2,000.00 mm	
CHKS	Height : 7.50 mm Width : 35.00 mm Thickness : 1.00 mm	
CHS	Height : 15.00 mm Width : 32.00 mm Thickness : 1.50 mm	

**DIN Rail, Unperforated**

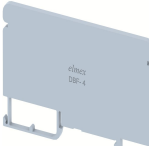

CHKD	Height : 15.00 mm Width : 35.00 mm Thickness : 1.50 mm	
CHK	Height : 7.50 mm Width : 35.00 mm Thickness : 1.00 mm	

**End Cap**

CHKENDCAP	Height : 14.00 mm Width : 9.00 mm Length : 41.50 mm	
-----------	---	---

End Clamp		
SCUP	Height : 34.00 mm Width : 9.00 mm Length : 44.75 mm	
SCEC35	Height : 31.50 mm Width : 8.00 mm Length : 45.80 mm	
SCUSL	Height : 41.10 mm Width : 8.00 mm Length : 47.50 mm	
SCUDD	Height : 50.00 mm Width : 10.00 mm Length : 55.60 mm	
DCKN	Height : 33.00 mm Width : 6.00 mm Length : 43.50 mm	
DCKN10	Height : 35.00 mm Width : 10.00 mm Length : 43.50 mm	
SCKN	Height : 34.50 mm Width : 8.00 mm Length : 44.90 mm	
SCUN	Height : 35.50 mm Width : 9.50 mm Length : 50.60 mm	

Marker For Terminal Blocks		
LABEL KN10	Height : 2.89 mm Width : 10.00 mm Length : 8.50 mm	

Partition Plate		
DBF-4	Height : 54.00 mm Width : 3.00 mm Length : 90.00 mm	
KBXF	Height : 53.40 mm Width : 1.50 mm Length : 54.00 mm	

Partition Plate		
KBX	Height : 43.00 mm Width : 1.50 mm Length : 54.00 mm	

Marker carriers		
SCUDDMLH	Height : 71.50 mm Width : 11.00 mm Length : 55.60 mm	
SCUNMLH	Height : 53.50 mm Width : 11.00 mm Length : 50.60 mm	
DCKNMLH	Height : 45.00 mm Width : 10.00 mm Length : 43.50 mm	
SCKNMLH	Height : 42.00 mm Width : 16.00 mm Length : 44.70 mm	