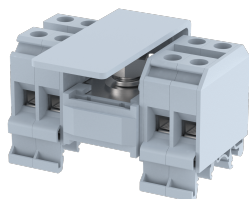


DBK1X4

Terminal Type - DBK1X4 , Distribution Block, nominal voltage: 800 V, nominal current: IC-114 A, OG-57 A, Rated cross-section - IC-35 mm², OG-10 mm², connection method: 1 Nut connection for IC & Screw connection for OG, number of connections: 9, cross-section: IC-10 -50 mm², OG-2.5 - 16 mm², mounting type: TS 35/7.5, TS 35/15, TS 32



Approvals



General Information

Product Name	DBK1X4
Connection Method	1 nut connection for IC & Screw clamp connection for OG
Rating	800 V / IC-114 A, OG-57 A / IC-35 mm ² , OG-10 mm ² / IC-6 Nm , OG-1.2 Nm
HSN Number	85389000
Standard Packing Qty (in No)	10
Country Of Origin	India
Screw thread	IC-M8 , OG-M4

Dimensions & Weight

Width	68 mm	2.68 inch
Length	74.79 mm	2.94 inch
Height	50.33 mm	1.98 inch
Weight of std. Packing Unit	1.48 Kg	

Material Data

Insulating Material	Polyamide 6,6
Standard Colour	Gray
Colour Variants	Red, Yellow, Blue, Black, Green, Khakhi, Gray

Rated Conductor Size

Conductor cross section flexible min	IC-10 mm ² , OG-2.5 mm ²
Conductor cross section flexible max	IC-50 mm ² , OG-10 mm ²
Conductor cross section solid min	IC-10 mm ² , OG-2.5 mm ²
Conductor cross section solid max	IC-50 mm ² , OG-16 mm ²

Rated Conductor Size

Conductor cross section flexible min	IC-10 mm ² , OG-2.5 mm ²
Conductor cross section flexible max	IC-50 mm ² , OG-10 mm ²

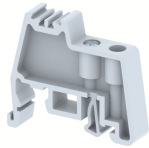
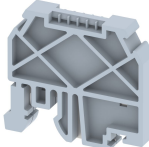
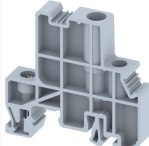

Conductor cross section solid min	IC-10 mm ² , OG-2.5 mm ²
Conductor cross section solid max	IC-50 mm ² , OG-16 mm ²

Ratings - UL

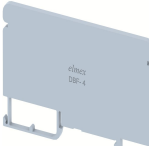

UL Standard	UL 1059
B - UL Nominal Voltage U _N	600 V
B - UL Nominal Current I _N	IC -130 A , OG-130 A
B - UL Wire Min	IC - 8 AWG , OG - 16 AWG
B - UL Wire Max	IC - 1 AWG , OG - 6 AWG

Product Accessories

Cover Profile		
PCPDBF-4	Height : 13.10 mm Thickness : 1.00 mm Length : 95.00 mm	
DIN Rail Perforated		
CHKDS	Height : 15.00 mm Width : 35.00 mm Thickness : 1.50 mm Length : 2,000.00 mm	
CHKS	Height : 7.50 mm Width : 35.00 mm Thickness : 1.00 mm	
CHS	Height : 15.00 mm Width : 32.00 mm Thickness : 1.50 mm	
DIN Rail, Unperforated		
CHKD	Height : 15.00 mm Width : 35.00 mm Thickness : 1.50 mm	
CHK	Height : 7.50 mm Width : 35.00 mm Thickness : 1.00 mm	
End Cap		
CHKENDCAP	Height : 14.00 mm Width : 9.00 mm Length : 41.50 mm	

End Clamp		
SCUP	Height : 34.00 mm Width : 9.00 mm Length : 44.75 mm	
SCEC35	Height : 31.50 mm Width : 8.00 mm Length : 45.80 mm	
SCUSL	Height : 41.10 mm Width : 8.00 mm Length : 47.50 mm	
SCUDD	Height : 50.00 mm Width : 10.00 mm Length : 55.60 mm	
DCKN	Height : 33.00 mm Width : 6.00 mm Length : 43.50 mm	
DCKN10	Height : 35.00 mm Width : 10.00 mm Length : 43.50 mm	
SCKN	Height : 34.50 mm Width : 8.00 mm Length : 44.90 mm	
SCUN	Height : 35.50 mm Width : 9.50 mm Length : 50.60 mm	

Marker For Terminal Blocks		
LABEL KN10	Height : 2.89 mm Width : 10.00 mm Length : 8.50 mm	

Partition Plate		
DBF-4	Height : 54.00 mm Width : 3.00 mm Length : 90.00 mm	
KBXF	Height : 53.40 mm Width : 1.50 mm Length : 54.00 mm	

Partition Plate		
KBX	Height : 43.00 mm Width : 1.50 mm Length : 54.00 mm	

Marker carriers		
SCUDDMLH	Height : 71.50 mm Width : 11.00 mm Length : 55.60 mm	
SCUNMLH	Height : 53.50 mm Width : 11.00 mm Length : 50.60 mm	
DCKNMLH	Height : 45.00 mm Width : 10.00 mm Length : 43.50 mm	
SCKNMLH	Height : 42.00 mm Width : 16.00 mm Length : 44.70 mm	