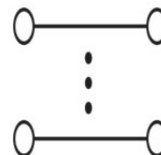
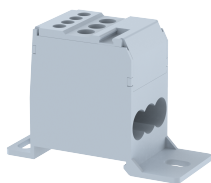


## DBD16

Terminal Type - DBD16, Panel Mounted distribution, nominal voltage: 630 V, nominal current: 76 A , Rated cross-section - IC-16 mm<sup>2</sup>,OG-2X16 mm<sup>2</sup>, 4X6 mm<sup>2</sup>, connection method: Screw connection, number of connections: 7 , cross-section: IC- 6 - 16 mm<sup>2</sup>,OG- 2.5-16 mm<sup>2</sup>, mounting type: TS35/15, TS35/7.5



### Approvals



### General Information

Product Name	DBD16
Connection Method	Screw Connection
Rating	630 V / 76 A / IC-16 mm <sup>2</sup> ,OG-2X16 mm <sup>2</sup> , 4X6 mm <sup>2</sup> / IC-1.2 Nm , OG-0.8 Nm
HSN Number	85389000
Standard Packing Qty (in No)	10
Country Of Origin	India
Screw thread	IC-M5 , OG-M4

### Dimensions & Weight

Width	27.5 mm	1.08 inch
Length	66 mm	2.6 inch
Height	46.5 mm	1.83 inch
Weight of std. Packing Unit	0.73 Kg	

### Material Data

Insulating Material	Polyamide 6,6
Standard Colour	Gray
Colour Variants	Red, Yellow, Blue, Black, Green, Khakhi

### Rated Conductor Size

Conductor cross section flexible min	IC-6 mm <sup>2</sup> , OG-2.5 to 6 mm <sup>2</sup>
Conductor cross section flexible max	IC-16 mm <sup>2</sup> , OG-6 to 16 mm <sup>2</sup>
Conductor cross section solid min	IC-6 mm <sup>2</sup> , OG-2.5 to 6 mm <sup>2</sup>
Conductor cross section solid max	IC-16 mm <sup>2</sup> , OG-6 to 16 mm <sup>2</sup>

### Rated Conductor Size

Conductor cross section flexible min	IC-6 mm <sup>2</sup> , OG-2.5 to 6 mm <sup>2</sup>
Conductor cross section flexible max	IC-16 mm <sup>2</sup> , OG-6 to 16 mm <sup>2</sup>

Conductor cross section solid min	IC-6 mm <sup>2</sup> , OG-2.5 to 6 mm <sup>2</sup>
Conductor cross section solid max	IC-16 mm <sup>2</sup> , OG-6 to 16 mm <sup>2</sup>

**Product Accessories**

**Cover Profile**

PCPDBF-3	Height : 14.10 mm Thickness : 1.50 mm Length : 79.00 mm	
----------	---	---

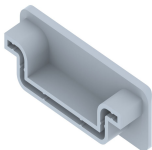
**DIN Rail Perforated**

CHKDS	Height : 15.00 mm Width : 35.00 mm Thickness : 1.50 mm Length : 2,000.00 mm	
CHKS	Height : 7.50 mm Width : 35.00 mm Thickness : 1.00 mm	

**DIN Rail, Unperforated**

CHKD	Height : 15.00 mm Width : 35.00 mm Thickness : 1.50 mm	
CHK	Height : 7.50 mm Width : 35.00 mm Thickness : 1.00 mm	

**End Cap**


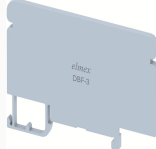
CHKENDCAP	Height : 14.00 mm Width : 9.00 mm Length : 41.50 mm	
-----------	---	---


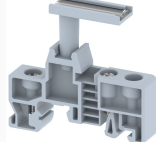
**End Clamp**

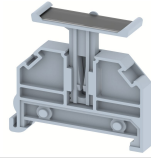
SCUP	Height : 34.00 mm Width : 9.00 mm Length : 44.75 mm	
SCEC35	Height : 31.50 mm Width : 8.00 mm Length : 45.80 mm	
SCUSL	Height : 41.10 mm Width : 8.00 mm Length : 47.50 mm	

End Clamp		
SCUDD	Height : 50.00 mm Width : 10.00 mm Length : 55.60 mm	
DCKN	Height : 33.00 mm Width : 6.00 mm Length : 43.50 mm	
DCKN10	Height : 35.00 mm Width : 10.00 mm Length : 43.50 mm	
SCKN	Height : 34.50 mm Width : 8.00 mm Length : 44.90 mm	
SCUN	Height : 35.50 mm Width : 9.50 mm Length : 50.60 mm	

Marker For Terminal Blocks		
LABEL KN12	Height : 2.43 mm Width : 12.00 mm Length : 8.50 mm	

Partition Plate		
KBXF	Height : 53.40 mm Width : 1.50 mm Length : 54.00 mm	
DBF-3	Height : 50.00 mm Width : 3.00 mm Length : 78.00 mm	

Marker carriers		
SCUDDMLH	Height : 71.50 mm Width : 11.00 mm Length : 55.60 mm	
SCUNMLH	Height : 53.50 mm Width : 11.00 mm Length : 50.60 mm	

<b>Marker carriers</b>		
DCKNMLH	Height : 45.00 mm Width : 10.00 mm Length : 43.50 mm	
SCKNMLH	Height : 42.00 mm Width : 16.00 mm Length : 44.70 mm	