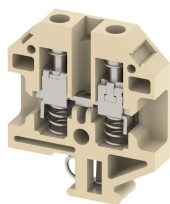


CSLT1

Terminal Type - CSLT1, Feed Through Terminal block, nominal voltage: 800 V, nominal current: 57 A, Rated cross-section - 10 mm², connection method: Screw connection with spring support, number of connections: 2, cross-section: 1.5 mm² - 10 mm², mounting type: TS32



Approvals



General Information

Product Name	CSLT1
Connection Method	Screw Connection with spring support
Rating	800 V / 57 A / 10 mm ² / 1.2 Nm
HSN Number	85389000
Standard Packing Qty (in No)	50
Country Of Origin	India
Screw thread	M4

Dimensions & Weight

Width	11 mm	0.43 inch
Length	50 mm	1.97 inch
Height	57.5 mm	2.26 inch
Weight of std. Packing Unit	1.79 Kg	

Material Data

Insulating Material	Melamine
Standard Colour	Khakhi
Colour Variants	Red, Yellow, Blue, Black, Green

Rated Conductor Size

Conductor cross section flexible min	1.5 mm ²
Conductor cross section flexible max	10 mm ²
Conductor cross section solid min	1.5 mm ²
Conductor cross section solid max	10 mm ²

Rated Conductor Size



Conductor cross section flexible min	1.5 mm ²
Conductor cross section flexible max	10 mm ²

Conductor cross section solid min	1.5 mm ²
Conductor cross section solid max	10 mm ²

Product Accessories

Cover Profile		
PCK3	Height : 28.00 mm Width : 58.35 mm Thickness : 1.00 mm	
Cover Profile Carrier		
UHDD	Height : 74.50 mm Thickness : 2.00 mm Length : 55.82 mm	
DIN Rail Perforated		
CHS	Height : 15.00 mm Width : 32.00 mm Thickness : 1.50 mm	
End Clamp		
SCS	Height : 26.90 mm Length : 21.00 mm	
SCSN	Height : 31.00 mm Width : 8.40 mm Length : 27.00 mm	
SCUP	Height : 34.00 mm Width : 9.00 mm Length : 44.75 mm	
SCUSL	Height : 41.10 mm Width : 8.00 mm Length : 47.50 mm	
SCUDD	Height : 50.00 mm Width : 10.00 mm Length : 55.60 mm	
SCUN	Height : 35.50 mm Width : 9.50 mm Length : 50.60 mm	

End Cover		
EPSL	Height : 44.00 mm Width : 2.50 mm Length : 50.00 mm	
Fixed Bridge		
CCLA1L-10W	Height : 28.00 mm Pitch : 11.00 mm Length : 106.60 mm	
CCLA1L-2W	Height : 28.00 mm Pitch : 11.00 mm Length : 20.20 mm	
CCLA1L-3W	Height : 28.00 mm Pitch : 11.00 mm Length : 30.20 mm	
CCLA1L-4W	Height : 28.00 mm Pitch : 11.00 mm Length : 40.20 mm	
CCLA1L-5W	Height : 28.00 mm Pitch : 11.00 mm Length : 51.20 mm	
Marker For Terminal Blocks		
LABEL KN10	Height : 2.89 mm Width : 10.00 mm Length : 8.50 mm	
Partition Plate		
KBZF	Height : 65.00 mm Width : 1.50 mm Length : 65.00 mm	
Switching Jumper		
RSL1L	Width : 7.00 mm Thickness : 1.60 mm Length : 18.00 mm	
LSR1L	Height : 30.00 mm Width : 6.00 mm	

Marker carriers		
GMC	Height : 48.00 mm Width : 39.00 mm Thickness : 1.00 mm Length : 38.00 mm	
SCUDDMLH	Height : 71.50 mm Width : 11.00 mm Length : 55.60 mm	
SCUNMLH	Height : 53.50 mm Width : 11.00 mm Length : 50.60 mm	