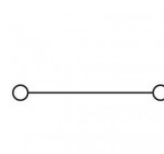
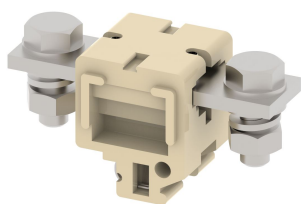


CBT300

Terminal Type - CBT300, High Current connectors, nominal voltage: 1000 V, nominal current: 300 A, Rated cross-section - 120 mm², connection method: Bolt connection, number of connections: 2, cross-section: 70 mm² - 120 mm², mounting type: TS32



Approvals



General Information

Product Name	CBT300
Connection Method	Bolt Connection
Rating	1000 V / 300 A / 120 mm ² / 10 Nm
HSN Number	85389000
Standard Packing Qty (in No)	10
Country Of Origin	India
Screw thread	M10

Dimensions & Weight

Width	40 mm	1.57 inch
Length	96 mm	3.78 inch
Height	49.7 mm	1.96 inch
Weight of std. Packing Unit	2.77 Kg	

Material Data

Insulating Material	Melamine
Standard Colour	Khakhi
Colour Variants	Red, Yellow, Blue, Black, Green

Rated Conductor Size

Conductor cross section flexible min	70 mm ²
Conductor cross section flexible max	120 mm ²
Conductor cross section solid min	70 mm ²
Conductor cross section solid max	120 mm ²

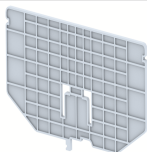
Rated Conductor Size

Conductor cross section flexible min	70 mm ²
Conductor cross section flexible max	120 mm ²
Conductor cross section solid min	70 mm ²

Conductor cross section solid max	120 mm ²
-----------------------------------	---------------------

Product Accessories

Cover Profile		
PCP250	Width : 49.00 mm Thickness : 1.50 mm Length : 166.00 mm	
DIN Rail Perforated		
CHS	Height : 15.00 mm Width : 32.00 mm Thickness : 1.50 mm	
End Clamp		
SCS	Height : 26.90 mm Length : 21.00 mm	
SCSN	Height : 31.00 mm Width : 8.40 mm Length : 27.00 mm	
SCUP	Height : 34.00 mm Width : 9.00 mm Length : 44.75 mm	
SCUSL	Height : 41.10 mm Width : 8.00 mm Length : 47.50 mm	
SCUDD	Height : 50.00 mm Width : 10.00 mm Length : 55.60 mm	
SCUN	Height : 35.50 mm Width : 9.50 mm Length : 50.60 mm	
Marker For Terminal Blocks		
LABEL KN10	Height : 2.89 mm Width : 10.00 mm Length : 8.50 mm	

Partition Plate		
BPA17/25	Height : 81.20 mm Thickness : 3.00 mm Length : 160.00 mm	

Marker carriers		
GMC	Height : 48.00 mm Width : 39.00 mm Thickness : 1.00 mm Length : 38.00 mm	
SCUDDMLH	Height : 71.50 mm Width : 11.00 mm Length : 55.60 mm	
SCUNMLH	Height : 53.50 mm Width : 11.00 mm Length : 50.60 mm	

