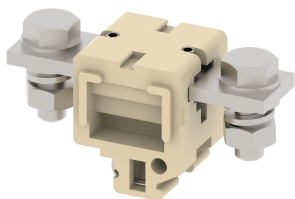


## CBT250T

Terminal Type - CBT250T, High Current connectors, nominal voltage: 1000 V, nominal current: 250 A, Rated cross-section - 95 mm<sup>2</sup>, connection method: Bolt connection - Nuts are slotted for screwdriver operation , number of connections: 2, cross-section: 70 mm<sup>2</sup> - 95 mm<sup>2</sup>, mounting type: TS32



### Approvals



### General Information

Product Name	CBT250T
Connection Method	Bolt Connection
Rating	1000 V / 250 A / 95 mm <sup>2</sup> / 10 Nm
HSN Number	85389000
Standard Packing Qty (in No)	10
Country Of Origin	India
Screw thread	M10

### Dimensions & Weight

Width	40 mm	1.57 inch
Length	96 mm	3.78 inch
Height	49.7 mm	1.96 inch
Weight of std. Packing Unit	2.73 Kg	

### Material Data

Insulating Material	Melamine
Standard Colour	Khakhi
Colour Variants	Red, Yellow, Blue, Black, Green

### Rated Conductor Size

Conductor cross section flexible min	70 mm <sup>2</sup>
Conductor cross section flexible max	95 mm <sup>2</sup>
Conductor cross section solid min	70 mm <sup>2</sup>
Conductor cross section solid max	95 mm <sup>2</sup>

### Rated Conductor Size

Conductor cross section flexible min	70 mm <sup>2</sup>
Conductor cross section flexible max	95 mm <sup>2</sup>

Conductor cross section solid min	70 mm <sup>2</sup>
Conductor cross section solid max	95 mm <sup>2</sup>

**Product Accessories**

**Cover Profile**

PCP250	Width : 49.00 mm Thickness : 1.50 mm Length : 166.00 mm	
--------	---	---

**DIN Rail Perforated**

CHS	Height : 15.00 mm Width : 32.00 mm Thickness : 1.50 mm	
-----	--	---


**End Clamp**

SCS	Height : 26.90 mm Length : 21.00 mm	
SCSN	Height : 31.00 mm Width : 8.40 mm Length : 27.00 mm	
SCUP	Height : 34.00 mm Width : 9.00 mm Length : 44.75 mm	
SCUSL	Height : 41.10 mm Width : 8.00 mm Length : 47.50 mm	
SCUDD	Height : 50.00 mm Width : 10.00 mm Length : 55.60 mm	
SCUN	Height : 35.50 mm Width : 9.50 mm Length : 50.60 mm	

**Marker For Terminal Blocks**

LABEL KN10	Height : 2.89 mm Width : 10.00 mm Length : 8.50 mm	
------------	--	---

Partition Plate		
BPA17/25	Height : 81.20 mm Thickness : 3.00 mm Length : 160.00 mm	

Marker carriers		
GMC	Height : 48.00 mm Width : 39.00 mm Thickness : 1.00 mm Length : 38.00 mm	
SCUDDMLH	Height : 71.50 mm Width : 11.00 mm Length : 55.60 mm	
SCUNMLH	Height : 53.50 mm Width : 11.00 mm Length : 50.60 mm	

