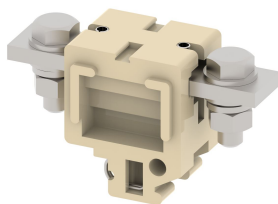


CBT170T

Terminal Type - CBT170T , High Current connectors, nominal voltage: 1000 V, nominal current: 192 A, Rated cross-section - 70 mm², Rated cross-section - 70 mm² , connection method: Bolt connection - Nuts are slotted for screwdriver operation, number of connections: 2, cross-section: 50 mm² - 70 mm², mounting type: TS32



Approvals



General Information

| | |
|------------------------------|--|
| Product Name | CBT170T |
| Connection Method | Bolt Connection |
| Rating | 1000 V / 192 A / 70 mm ² / 6 Nm |
| HSN Number | 85389000 |
| Standard Packing Qty (in No) | 10 |
| Country Of Origin | India |
| Screw thread | M8 |

Dimensions & Weight

| | | |
|-----------------------------|---------|-----------|
| Width | 32 mm | 1.26 inch |
| Length | 85 mm | 3.35 inch |
| Height | 49 mm | 1.93 inch |
| Weight of std. Packing Unit | 1.71 Kg | |

Material Data

| | |
|---------------------|---------------------------------|
| Insulating Material | Melamine |
| Standard Colour | Khakhi |
| Colour Variants | Red, Yellow, Blue, Black, Green |

Rated Conductor Size

| | |
|--------------------------------------|--------------------|
| Conductor cross section flexible min | 50 mm ² |
| Conductor cross section flexible max | 70 mm ² |
| Conductor cross section solid min | 50 mm ² |
| Conductor cross section solid max | 70 mm ² |

Rated Conductor Size

| | |
|--------------------------------------|--------------------|
| Conductor cross section flexible min | 50 mm ² |
| Conductor cross section flexible max | 70 mm ² |

| | |
|-----------------------------------|--------------------|
| Conductor cross section solid min | 50 mm ² |
| Conductor cross section solid max | 70 mm ² |

Product Accessories

Cover Profile

| | | |
|--------|---|---|
| PCP170 | Width : 37.00 mm Thickness : 1.50 mm Length : 166.00 mm |  |
|--------|---|---|

DIN Rail Perforated

| | | |
|-----|--|---|
| CHS | Height : 15.00 mm Width : 32.00 mm Thickness : 1.50 mm |  |
|-----|--|---|

End Clamp

| | | |
|-------|--|---|
| SCS | Height : 26.90 mm Length : 21.00 mm |  |
| SCSN | Height : 31.00 mm Width : 8.40 mm Length : 27.00 mm |  |
| SCUP | Height : 34.00 mm Width : 9.00 mm Length : 44.75 mm |  |
| SCUSL | Height : 41.10 mm Width : 8.00 mm Length : 47.50 mm |  |
| SCUDD | Height : 50.00 mm Width : 10.00 mm Length : 55.60 mm |  |
| SCUN | Height : 35.50 mm Width : 9.50 mm Length : 50.60 mm |  |

Marker For Terminal Blocks

| | | |
|------------|--|---|
| LABEL KN10 | Height : 2.89 mm Width : 10.00 mm Length : 8.50 mm |  |
|------------|--|---|

| Partition Plate | | |
|-----------------|--|---|
| BPA17/25 | Height : 81.20 mm Thickness : 3.00 mm Length : 160.00 mm |  |

| Marker carriers | | |
|-----------------|---|---|
| GMC | Height : 48.00 mm Width : 39.00 mm Thickness : 1.00 mm Length : 38.00 mm |  |
| SCUDDMLH | Height : 71.50 mm Width : 11.00 mm Length : 55.60 mm |  |
| SCUNMLH | Height : 53.50 mm Width : 11.00 mm Length : 50.60 mm |  |

