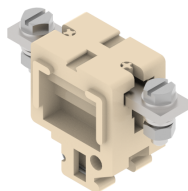


CBT110T

Terminal Type - CBT110T , High Current connectors, nominal voltage: 1000 V, nominal current: 150 A, Rated cross-section - 50 mm², connection method: Bolt connection -Nuts are slotted for screwdriver operation, number of connections: 2, cross-section: 35 mm² - 50 mm², mounting type: TS32



Approvals



General Information

| | |
|------------------------------|--|
| Product Name | CBT110T |
| Connection Method | Bolt Connection |
| Rating | 1000 V / 150 A / 50 mm ² / 3 Nm |
| HSN Number | 85389000 |
| Standard Packing Qty (in No) | 10 |
| Country Of Origin | India |
| Screw thread | M6 |

Dimensions & Weight

| | | |
|-----------------------------|---------|-----------|
| Width | 28 mm | 1.1 inch |
| Length | 75 mm | 2.95 inch |
| Height | 49 mm | 1.93 inch |
| Weight of std. Packing Unit | 1.15 Kg | |

Material Data

| | |
|---------------------|---------------------------------|
| Insulating Material | Melamine |
| Standard Colour | Khakhi |
| Colour Variants | Red, Yellow, Blue, Black, Green |

Rated Conductor Size

| | |
|--------------------------------------|--------------------|
| Conductor cross section flexible min | 35 mm ² |
| Conductor cross section flexible max | 50 mm ² |
| Conductor cross section solid min | 35 mm ² |
| Conductor cross section solid max | 50 mm ² |

Rated Conductor Size

| | |
|--------------------------------------|--------------------|
| Conductor cross section flexible min | 35 mm ² |
| Conductor cross section flexible max | 50 mm ² |

| | |
|-----------------------------------|--------------------|
| Conductor cross section solid min | 35 mm ² |
| Conductor cross section solid max | 50 mm ² |

Product Accessories

Cover Profile

| | | |
|--------|---|---|
| PCP110 | Width : 32.00 mm Thickness : 1.50 mm Length : 129.50 mm |  |
|--------|---|---|

DIN Rail Perforated

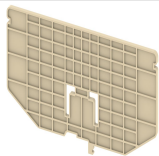
| | | |
|-----|--|---|
| CHS | Height : 15.00 mm Width : 32.00 mm Thickness : 1.50 mm |  |
|-----|--|---|



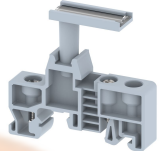
End Clamp

| | | |
|-------|--|---|
| SCS | Height : 26.90 mm Length : 21.00 mm |  |
| SCSN | Height : 31.00 mm Width : 8.40 mm Length : 27.00 mm |  |
| SCUP | Height : 34.00 mm Width : 9.00 mm Length : 44.75 mm |  |
| SCUSL | Height : 41.10 mm Width : 8.00 mm Length : 47.50 mm |  |
| SCUDD | Height : 50.00 mm Width : 10.00 mm Length : 55.60 mm |  |
| SCUN | Height : 35.50 mm Width : 9.50 mm Length : 50.60 mm |  |

Marker For Terminal Blocks

| | | |
|------------|--|---|
| LABEL KN10 | Height : 2.89 mm Width : 10.00 mm Length : 8.50 mm |  |
|------------|--|---|

| Partition Plate | | |
|-----------------|--|---|
| BPA110 | Height : 66.00 mm Width : 3.00 mm Length : 125.00 mm |  |

| Marker carriers | | |
|-----------------|---|---|
| GMC | Height : 48.00 mm Width : 39.00 mm Thickness : 1.00 mm Length : 38.00 mm |  |
| SCUDDMLH | Height : 71.50 mm Width : 11.00 mm Length : 55.60 mm |  |
| SCUNMLH | Height : 53.50 mm Width : 11.00 mm Length : 50.60 mm |  |

