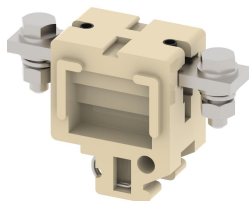


CBT110

Terminal Type - CBT110, High Current connectors, nominal voltage: 1000 V, nominal current: 150 A, Rated cross-section - 50 mm², connection method: Bolt connection, number of connections: 2, cross-section: 35 mm² - 50 mm², mounting type: TS32



Approvals



General Information

Product Name	CBT110
Connection Method	Bolt Connection
Rating	1000 V / 150 A / 50 mm ² / 3 Nm
HSN Number	85389000
Standard Packing Qty (in No)	10
Country Of Origin	India
Screw thread	M6

Dimensions & Weight

Width	28 mm	1.1 inch
Length	75 mm	2.95 inch
Height	49 mm	1.93 inch
Weight of std. Packing Unit	1.15 Kg	

Material Data

Insulating Material	Melamine
Standard Colour	Khakhi
Colour Variants	Red, Yellow, Blue, Black, Green

Rated Conductor Size

Conductor cross section flexible min	35 mm ²
Conductor cross section flexible max	50 mm ²
Conductor cross section solid min	35 mm ²
Conductor cross section solid max	50 mm ²

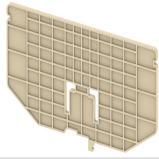


Rated Conductor Size

Conductor cross section flexible min	35 mm ²
Conductor cross section flexible max	50 mm ²
Conductor cross section solid min	35 mm ²

Conductor cross section solid max	50 mm ²
-----------------------------------	--------------------

Product Accessories

Cover Profile		
PCP110	Width : 32.00 mm Thickness : 1.50 mm Length : 129.50 mm	
DIN Rail Perforated		
CHS	Height : 15.00 mm Width : 32.00 mm Thickness : 1.50 mm	
End Clamp		
SCS	Height : 26.90 mm Length : 21.00 mm	
SCSN	Height : 31.00 mm Width : 8.40 mm Length : 27.00 mm	
SCUP	Height : 34.00 mm Width : 9.00 mm Length : 44.75 mm	
SCUSL	Height : 41.10 mm Width : 8.00 mm Length : 47.50 mm	
SCUDD	Height : 50.00 mm Width : 10.00 mm Length : 55.60 mm	
SCUN	Height : 35.50 mm Width : 9.50 mm Length : 50.60 mm	
Marker For Terminal Blocks		
LABEL KN10	Height : 2.89 mm Width : 10.00 mm Length : 8.50 mm	

Partition Plate		
BPA110	Height : 66.00 mm Width : 3.00 mm Length : 125.00 mm	
Marker carriers		
GMC	Height : 48.00 mm Width : 39.00 mm Thickness : 1.00 mm Length : 38.00 mm	
SCUDDMLH	Height : 71.50 mm Width : 11.00 mm Length : 55.60 mm	
SCUNMLH	Height : 53.50 mm Width : 11.00 mm Length : 50.60 mm	